

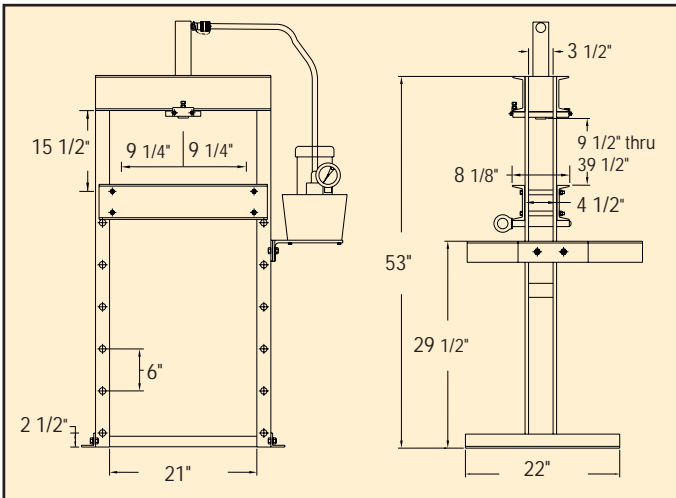
PRESSES

H-FRAME - 10 TONS

10 Ton Press Used In Assembly Of Manual Hoists.



- Single or double acting models available.
- Large daylight with open sides for easy loading.
- Heavy duty welded construction.
- Rigid frame under full load.
- Moveable work head for maximum versatility.
- Adjustable work bed.
- Compact & portable.
- Includes tonnage gauge.
- IES Series comes with pendant control.



A manufacturer of small hoists performs light assembly effortlessly using the Simplex IMS-1010 ten ton press. "We use the press for a variety of light work that varies from job to job. The compact size doesn't take up a lot of floor space, and we can easily move the press to different locations in the shop."

10 Ton H-Frame Press

Model Number Without Pump	Model Number With Pump	Type of Cylinder	Cylinder Stroke (in)	Type of Pump	Pump Model	Operation	Speed (in/min)		Weight With Pump (lbs)	Weight Without Pump (kg)
							Advance	Pressing		
IS1010	IAS1010	R1010 Single Acting 10 Ton Capacity	10 1/8	Air Powered	PA91	Advance Hold Retract	31	4.5	202	172
	IES1010			Electric Powered	PEM1021		104	9	204	
				Manual	P42		.38*	.06*	208	
ID1010	IED1010	RDA1010 D/A	10	Electric Powered	PEM1041	Advance Hold Retract	104	9	226	188
	IMD1010	10 Ton Capacity		Manual	P140D		1*	.10*	236	

* Inches Per Stroke.

■ Custom Build Your Press by ordering press models without pumps. For foot or pendant control, higher pressing speeds or optional pump motors order separately the Simplex pump and pump mounting kit that meet your requirements, and you're ready for operation.

Pump Mounting Kit	
For Hand Pumps	Model IM2
For Power Pumps	Model IM3
See Page 90	