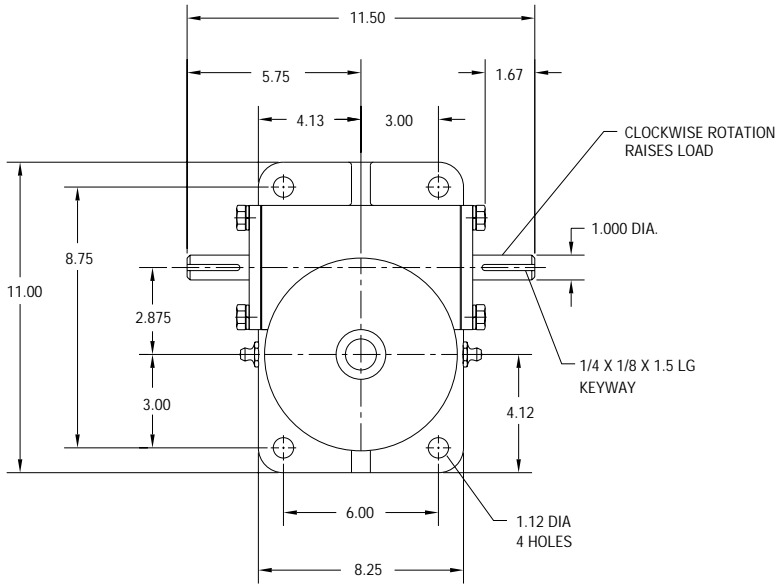


**B20 - 20 TON**

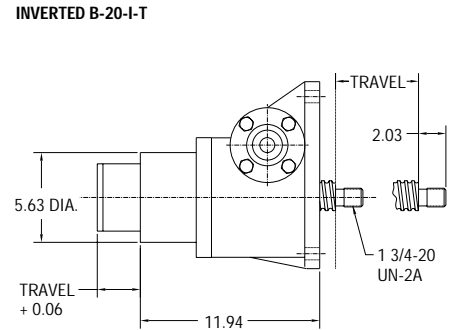
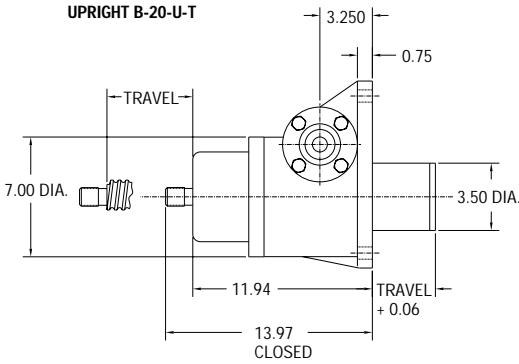


REF.	GEAR RATIO	TURNS /INCH	TORQUE REQUIRED TO LIFT 1 LB (lb-in)
L	8:1	16	0.016
H	24:1	48	0.008
RATED CAPACITY			40,000 lbs.
Max Input Speed			1800 rpm
Max Screw Stock			223 in.
Load Screw			2 1/4 in. dia. x .500 in. lead
Stop Nut Allowance			2 in.

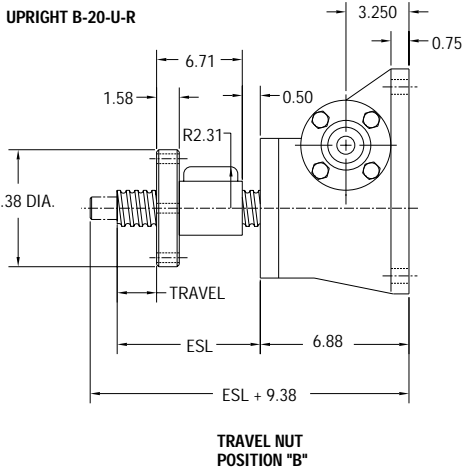
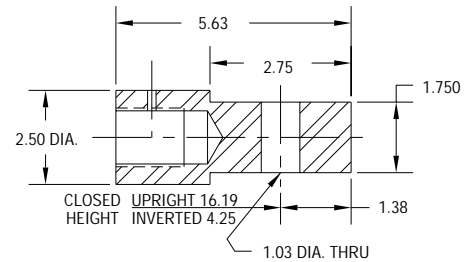
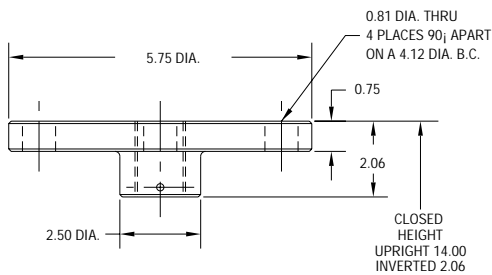
**NOTES:**

1. Load screw or nut must be secured to produce linear travel.
2. Dimensions are for reference only and will change with the addition of boots, attachments, and accessories.
3. Boots and boot adaptors are available. (Pages 74-75)
4. Travel must be adjusted to allow for mounting structure on inverted actuators.
5. Customer is responsible for providing positive stops at ends of travel.
6. **CAUTION: BALL SCREW JACKS ARE NON-LOCKING, BRAKES MUST BE USED TO HOLD SCREW IN POSITION.**

**TRANSLATING & KEYED**



**TOP PLATE AND CLEVIS END OPTIONS**



**ROTATING WITH TRAVELING NUT**

