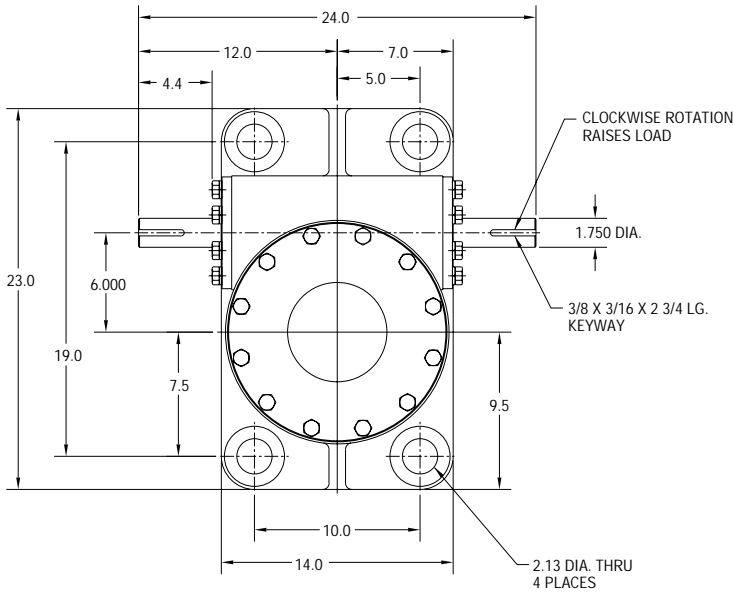


B-SERIES BALL SCREW ACTUATOR

UNI-LIFT

LINEAR MOTION
800-323-9114

B75 - 75 TON



REF.	GEAR RATIO	TURNS /INCH	TORQUE REQUIRED TO LIFT 1 LB (lb-in)
L	10 ² / ₃ :1	10.66	0.024
H	32:1	32	0.012
RATED CAPACITY			150,000 lbs.
Max Input Speed			1200 rpm
Max Screw Stock			206 in.
Load Screw			4 in. dia. x 1 in. lead
Stop Nut Allowance			4 in.

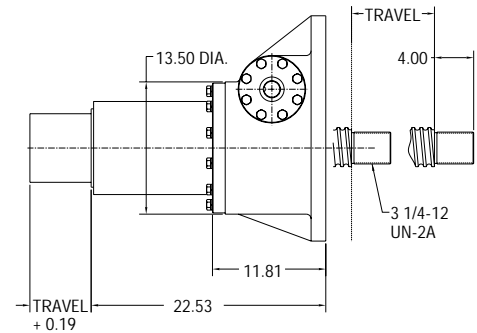
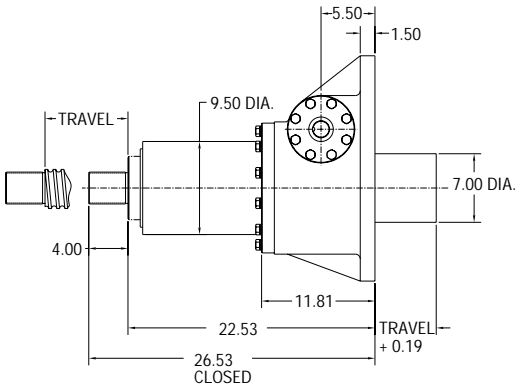
NOTES:

1. Load screw or nut must be secured to produce linear travel.
2. Dimensions are for reference only and will change with the addition of boots, attachments, and accessories.
3. Boots and boot adaptors are available. (Pages 74-75)
4. Travel must be adjusted to allow for mounting structure on inverted actuators.
5. Customer is responsible for providing positive stops at ends of travel.
6. **CAUTION: BALL SCREW JACKS ARE NON-LOCKING, BRAKES MUST BE USED TO HOLD SCREW IN POSITION.**

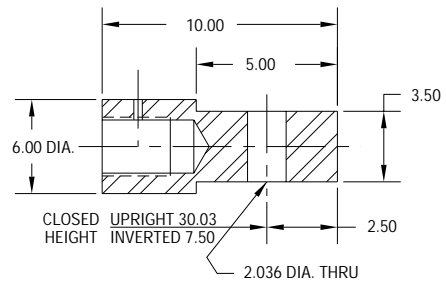
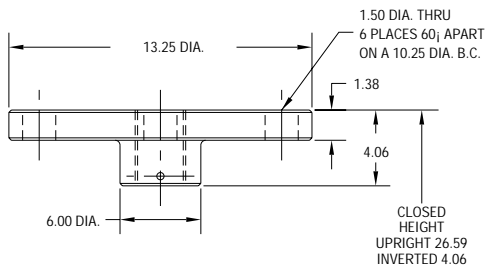
UPRIGHT B-75-U-T

TRANSLATING & KEYED

INVERTED B-75-I-T



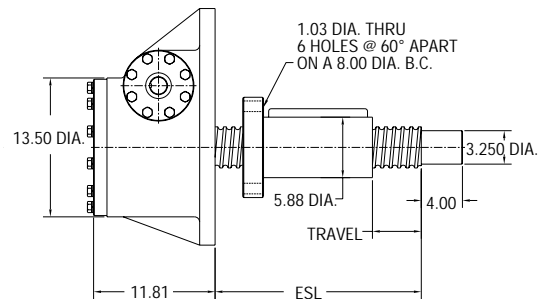
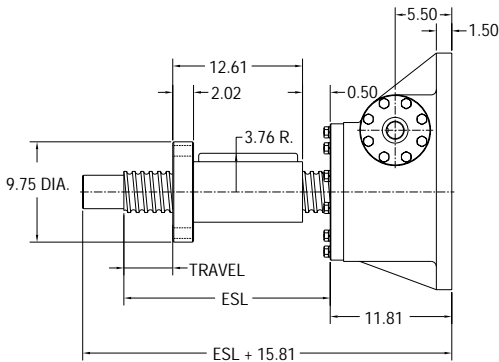
TOP PLATE AND CLEVIS END OPTIONS



UPRIGHT B-75-U-R

ROTATING WITH TRAVELING NUT

INVERTED B-75-I-R



TRAVEL NUT POSITION "B"

TRAVEL NUT POSITION "A"