

# H-FRAME BENCH 10 & 15 TONS

# PRESSES

Only Simplex offers Bench Presses with up to 15 ton capacities, moveable work heads and adjustable beds for maximum flexibility. For small production jobs, the adjustable bed eliminates wasted time approaching the work. IPB1010 & IPB1510 presses include a 10" stroke cylinder.

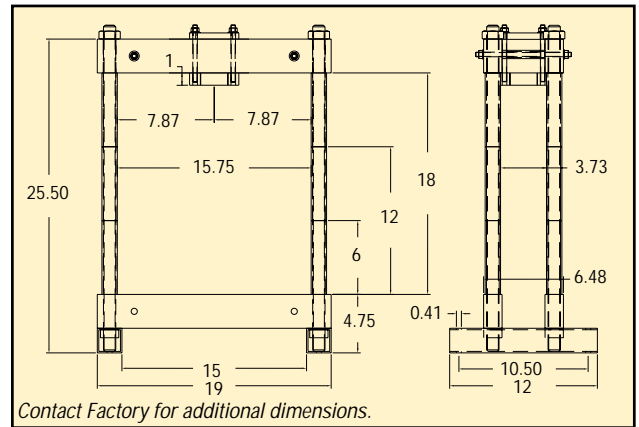


| Model Number w/Cyl. | Cap. (tons) | Type | Ram   | Stroke (mm) | Model Number w/o Cyl. | Weight (lbs) |
|---------------------|-------------|------|-------|-------------|-----------------------|--------------|
| IBP1010             | 10          | S/A  | R1010 | 257         | IPB10                 | 142          |
| IBP1510             | 15          |      | R1510 | 254         | IPB15                 | 150          |

- 10 or 15 ton capacities.
- Adjustable bed.
- Moveable work head.
- Wide variety of power sources.
- Large daylight.
- Heavy duty construction.

### Ordered Separately

| Capacity (tons) | Suggested Hand Pump | Suggested Electric Pump | Suggested Hose | Suggested Gauge | Gauge Adaptor | Weight (lbs) |
|-----------------|---------------------|-------------------------|----------------|-----------------|---------------|--------------|
| 10 ton          | P42                 | PEM2031                 | HC6            | G6              | GA1           | 130          |
| 15 ton          |                     |                         |                |                 |               |              |



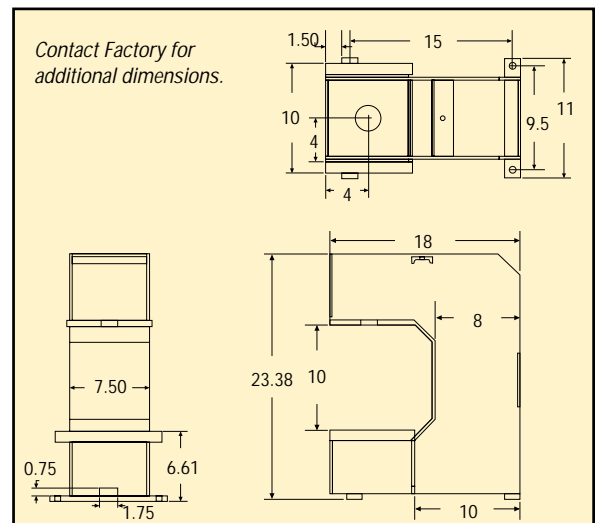
# C-FRAME 5 & 10 TONS



The IPC5 & IPC10 Series hydraulic presses provide up to 5 or 10 ton capacities. Choose from a wide range of electric or air hydraulic power sources.

All models incorporate an open throat design that makes loading and unloading larger jobs fast and easy.

| Model Number | Type of C-Frame     | Capacity (tons) | Stroke (in) | Weight (lbs) |
|--------------|---------------------|-----------------|-------------|--------------|
| IPC5         | R59 Cylinder Only   | 5               | 9           | 103          |
| IPC10        | R1010 Cylinder Only | 10              | 10          | 110          |



- Strong welded construction.
- Open throat design for easy loading.
- Mounting holes for solid bench mounting.
- Available with air, electric or manual power sources.

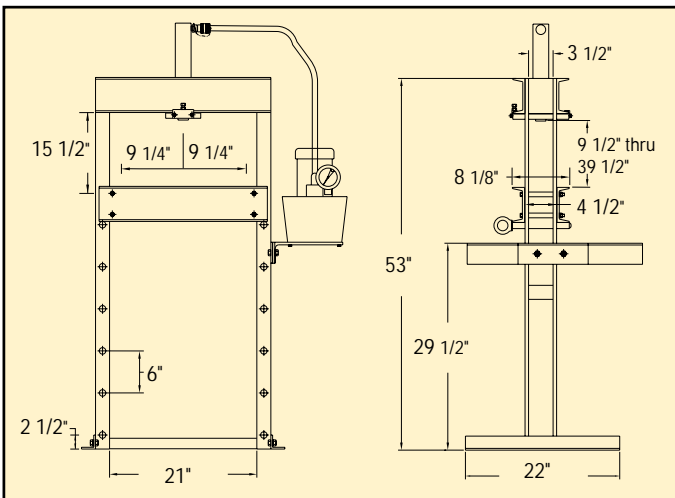
# PRESSES

## H-FRAME - 10 TONS

10 Ton Press Used In Assembly Of Manual Hoists.



- Single or double acting models available.
- Large daylight with open sides for easy loading.
- Heavy duty welded construction.
- Rigid frame under full load.
- Moveable work head for maximum versatility.
- Adjustable work bed.
- Compact & portable.
- Includes tonnage gauge.
- IES Series comes with pendant control.



A manufacturer of small hoists performs light assembly effortlessly using the Simplex IMS-1010 ten ton press. "We use the press for a variety of light work that varies from job to job. The compact size doesn't take up a lot of floor space, and we can easily move the press to different locations in the shop."

### 10 Ton H-Frame Press

| Model Number Without Pump | Model Number With Pump | Type of Cylinder                    | Cylinder Stroke (in) | Type of Pump     | Pump Model | Operation                  | Speed (in/min) |          | Weight With Pump (lbs) | Weight Without Pump (kg) |
|---------------------------|------------------------|-------------------------------------|----------------------|------------------|------------|----------------------------|----------------|----------|------------------------|--------------------------|
|                           |                        |                                     |                      |                  |            |                            | Advance        | Pressing |                        |                          |
| IS1010                    | IAS1010                | R1010 Single Acting 10 Ton Capacity | 10 1/8               | Air Powered      | PA91       | Advance<br>Hold<br>Retract | 31             | 4.5      | 202                    | 172                      |
|                           | IES1010                |                                     |                      | Electric Powered | PEM1021    |                            | 104            | 9        | 204                    |                          |
|                           | IMS1010                |                                     |                      | Manual           | P42        |                            | .38*           | .06*     | 208                    |                          |
| ID1010                    | IED1010                | RDA1010 D/A                         | 10                   | Electric Powered | PEM1041    |                            | 104            | 9        | 226                    | 188                      |
|                           | IMD1010                | 10 Ton Capacity                     |                      | Manual           | P140D      |                            | 1*             | .10*     | 236                    |                          |

\* Inches Per Stroke.

■ Custom Build Your Press by ordering press models without pumps. For foot or pendant control, higher pressing speeds or optional pump motors order separately the Simplex pump and pump mounting kit that meet your requirements, and you're ready for operation.

| Pump Mounting Kit |           |
|-------------------|-----------|
| For Hand Pumps    | Model IM2 |
| For Power Pumps   | Model IM3 |
| See Page 86       |           |

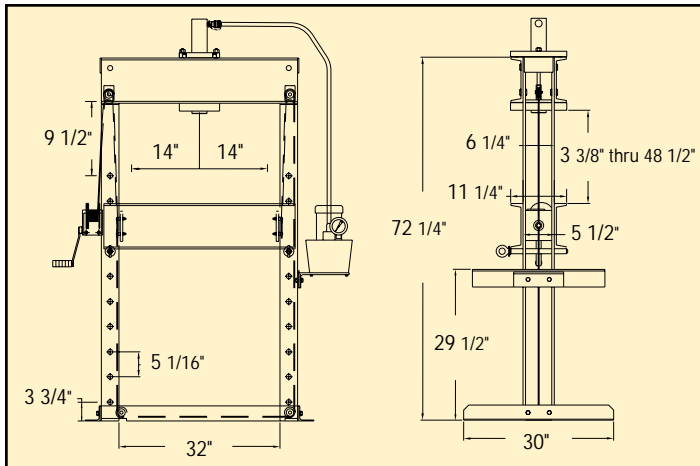
# H-FRAME - 25 & 30 TONS

# PRESSES

Simplex 25 Ton Press Reduces Production Line Down Time.



- Large daylight with open sides for easy loading.
- Heavy duty welded construction.
- Rigid frame under full load.
- Moveable work head for maximum versatility.
- Adjustable work bed with friction brake winch.
- Wide choice of pumps & pressing cylinders.
- Includes tonnage gauge.
- IED & IES Series comes with pendant control.



A manufacturer of industrial gear boxes used the Simplex 25 ton press in their production assembly line to press various size bearings on gear assemblies. "We can press up to 100 bearings an hour with the Simplex press. The hydraulics are reliable and easy to use and they keep working day after day."

|                              |            |
|------------------------------|------------|
| <b>Pump Mounting Kit</b>     |            |
| For Hand Pumps               | Model IM2  |
| For Power Pumps              | Model IM3  |
| See Page 86                  |            |
| <b>Cylinder Mounting Kit</b> |            |
| Single-Acting                | Model MC25 |
| Included with Press          |            |
| See Page 86                  |            |

## 25 and 30 Ton H-Frame Press

| Model Number Without Pump | Model Number With Pump | Type of Cylinder | Cylinder Stroke (in) | Type of Pump       | Pump Model       | Operation                  | Speed (in/min) |          | Weight With Pump (lbs) | Weight Without Pump (lbs) |
|---------------------------|------------------------|------------------|----------------------|--------------------|------------------|----------------------------|----------------|----------|------------------------|---------------------------|
|                           |                        |                  |                      |                    |                  |                            | Advance        | Pressing |                        |                           |
| IS256<br>IS2514           | IAS256<br>IAS2514      | R256/<br>R2514   | 6                    | Air<br>Powered     | PA91             | Advance<br>Hold<br>Retract | 14             | 2        | 417                    | ----                      |
|                           | Single Acting          | 6                | 419                  |                    |                  |                            |                |          |                        |                           |
| ID3014                    | IES256<br>IES2514      | 25 Ton Capacity  | 14                   | Manual<br>Powered  | P82              |                            | .5*            | .05*     | 435                    | 403                       |
|                           | Single Acting          | 6                | 423                  |                    |                  |                            |                |          |                        |                           |
| ID3014                    | IMS256<br>IMS2514      | RDA3014          | 14                   | Electric<br>Manual | PES3042<br>P140D |                            | 40             | 3        | 439                    | 428                       |
|                           | Single Acting          |                  |                      |                    |                  |                            |                |          | 6                      |                           |
|                           |                        |                  |                      |                    |                  | .5*                        | .05*           | 458      |                        |                           |

\* Inches Per Stroke.

■ Custom Build Your Press by ordering models without pumps. For foot or pendant control, higher pressing speeds or optional pump motors order separately the Simplex pump and pump mounting kit that meet your requirements, and you're ready for operation.

# PRESSES

## H-FRAME - 55 TONS

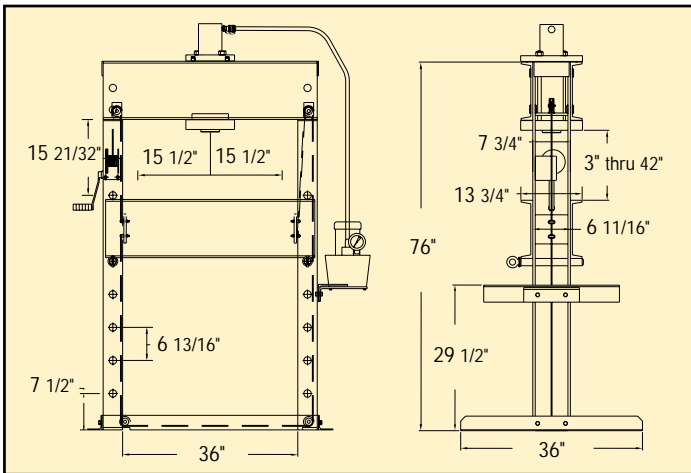
Simplex 55 Ton Press Handles Hundreds Of Different Jobs At Industrial Repair Shops.



- Large daylight with open sides for easy loading.
- Heavy duty construction.
- Rigid frame under full load.
- Moveable work head for maximum versatility.
- Adjustable work bed with friction brake winch.
- Wide choice of pumps & pressing cylinders.
- Choose double-acting presses for fast retraction.
- Includes tonnage gauge.
- IED & IES Series comes with pendant control.



Repair personnel were faced with a variety of difficult bending, pressing, straightening and disassembly jobs. "Almost every day we have to remove bearings, straighten cylinder rods, perform wheel repair, and rebuild gear boxes. The 55 ton press is perfect; it's adjustable bed and moveable work head gives us the flexibility to work on a wide variety of jobs."



| Pump Mounting Kit      |           |
|------------------------|-----------|
| For Hand Pumps         | Model IM2 |
| For Power Pumps        | Model IM3 |
| See Page 86            |           |
| Cylinder Mounting Kit  |           |
| Single & Double Acting |           |
| Model MC55             |           |
| See Page 86            |           |

### 55 Ton H-Frame Press

| Model Number Without Pump | Model Number With Pump | Type of Cylinder | Cylinder Stroke (in) | Type of Pump     | Pump Model | Operation                  | Speed (in/min) |          | Weight With Pump (lbs) | Weight Without Pump (lbs) |
|---------------------------|------------------------|------------------|----------------------|------------------|------------|----------------------------|----------------|----------|------------------------|---------------------------|
|                           |                        |                  |                      |                  |            |                            | Advance        | Pressing |                        |                           |
| IS556                     | IES556                 | R556 S/A         | 6                    | Electric Powered | PEM1021    | Advance<br>Hold<br>Retract | 23             | 2        | 707                    | 675                       |
| IS5513                    | IES5513                | R5513 S/A        | 13                   |                  |            |                            |                |          | 735                    | 703                       |
| ID556                     | IED556                 | RDA556 D/A       | 6                    |                  |            |                            | 748            | 710      |                        |                           |
| ID5512                    | IED5512                | RDA5512 D/A      | 12                   | Manual           | P82        |                            | .25*           | .02*     | 793                    | 755                       |
|                           | IMS556                 | R556 S/A         | 6                    |                  |            |                            |                |          | 711                    | ----                      |

\* Inches Per Stroke.

■ **Custom Build Your Press** by ordering models without pumps. For foot or pendant control, higher pressing speeds or optional pump motors order separately the Simplex pump and pump mounting kit that meet your requirements, and you're ready for operation.

# H-FRAME - 100 TONS

# PRESSES

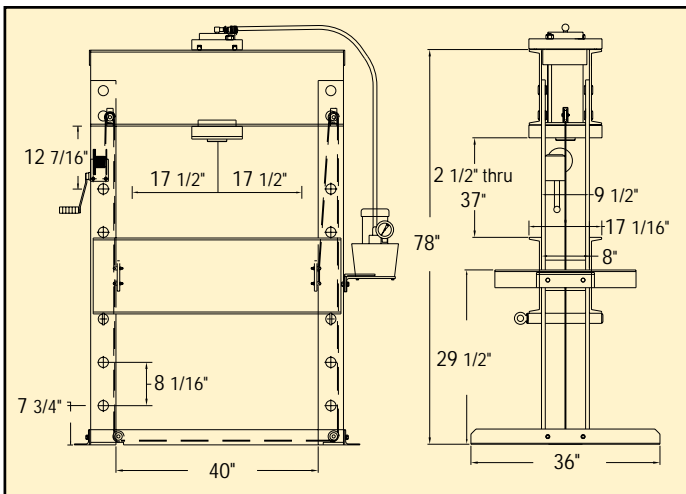
Simplex Presses Enhance Safety In High Force Pressing.



- Moveable work head for maximum versatility.
- Large daylight with open sides for easy loading.
- Heavy duty construction.
- Rigid frame under full load.
- Adjustable work bed with friction brake winch.
- Wide choice of pumps & pressing cylinders.
- Choose double-acting presses for fast retraction.
- Includes tonnage gauge.
- IED & IES Series comes with pendant control.



A machine shop needed to straighten forgings prior to machining. "We needed a pressing force of 100 tons and we didn't want to cut corners when it came to safety. Simplex presses do not rely on "bolt together" construction. Heavy duty pins, plus strong, welded construction across the upper bolster, puts the strength where it needs to be."



|                              |              |
|------------------------------|--------------|
| <b>Pump Mounting Kit</b>     |              |
| For Power Pumps              | Model IM3    |
| See Page 86                  |              |
| <b>Cylinder Mounting Kit</b> |              |
| Single-Acting                | Model MC100  |
| Double-Acting                | Model MCD100 |
| Included with press.         |              |
| See Page 86                  |              |

## 100 Ton H-Frame Press

| Model Number Without Pump | Model Number With Pump | Type of Cylinder | Cylinder Stroke (in) | Type of Pump     | Pump Model | Operation | Speed (in/min) |          | Weight With Pump (lbs) | Weight Without Pump (lbs) |
|---------------------------|------------------------|------------------|----------------------|------------------|------------|-----------|----------------|----------|------------------------|---------------------------|
|                           |                        |                  |                      |                  |            |           | Advance        | Pressing |                        |                           |
| IS1006                    | IES1006                | R1006 S/A        | 6                    | Electric Powered | PES4032    | Advance   | 19             | 2 3/4    | 1558                   | 1470                      |
| IS10010                   | IES10010               | R10010 S/A       | 10                   |                  |            |           |                |          |                        |                           |
| ID1006                    | IED1006                | RDA1006 D/A      | 6                    |                  | PES4042    | Retract   | 19             | 2 3/4    | 1620                   | 1532                      |
| ID10012                   | IED10012               | RDA10012 D/A     | 12                   |                  |            |           |                |          |                        |                           |

■ Custom Build Your Press by ordering models without pumps. For foot or pendant control, higher pressing speeds or optional pump motors order separately the Simplex pump and pump mounting kit that meet your requirements, and you're ready for operation.

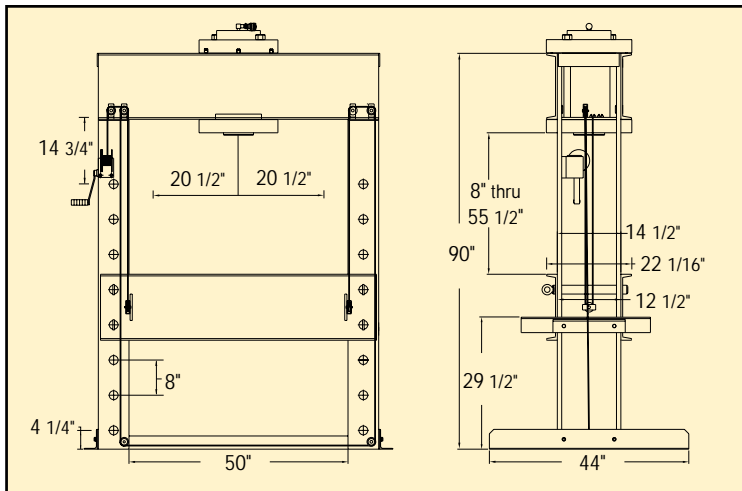
# PRESSES

## H-FRAME 150-200 TONS

Simplex Monster Press Used In Rail Car Maintenance.



- Remote control.
- Fast double-acting hydraulics.
- Large daylight with open sides for easy loading.
- Moveable work head for maximum versatility.
- Adjustable work bed with friction brake winch.
- Heavy duty pin & welded construction frame.
- Rigid frame under full load.
- Includes Tonnage Gauge.
- IED Series comes with pendant control.



Rail car repair shops are constantly faced with large jobs, reforming rail car components, installing and removing bolster parts and straightening or bending under-carriage assemblies. These applications require a reliable and safe high tonnage press. "The Simplex Monster Press gave us just what we were looking for, a large work area and easy operation."

*Presses ordered with pumps include remote pendant control and large 5 gallon reservoir. The pump is floor mounted.*

### 150 & 200 Ton H-Frame Press

| Model Number Without Pump | Model Number With Pump | Type of Cylinder | Cylinder Stroke (in) | Type of Pump     | Pump Model | Operation                | Speed (in/min) |          | Weight With Pump (lbs) | Weight Without Pump (lbs) |
|---------------------------|------------------------|------------------|----------------------|------------------|------------|--------------------------|----------------|----------|------------------------|---------------------------|
|                           |                        |                  |                      |                  |            |                          | Advance        | Pressing |                        |                           |
| ID15012                   | IED15012               | RDA15012 D/A     | 12                   | Electric Powered | PES6045    | Advance, Hold<br>Retract | 20             | 4.5      | 3035                   | 2839                      |
| ID20013                   | IED20013               | RDA20013 D/A     | 13                   |                  | 230 3 Ph.  |                          | 14             | 3.5      | 3180                   | 2984                      |

■ Custom Build Your Press by ordering models without pumps. Order separately any Simplex pump and pump mounting kit that meet your requirements, and you're ready for operation.