

# H-FRAME BENCH 10 & 15 TONS

# PRESSES

Only Simplex offers Bench Presses with up to 15 ton capacities, moveable work heads and adjustable beds for maximum flexibility. For small production jobs, the adjustable bed eliminates wasted time approaching the work. IPB1010 & IPB1510 presses include a 10" stroke cylinder.

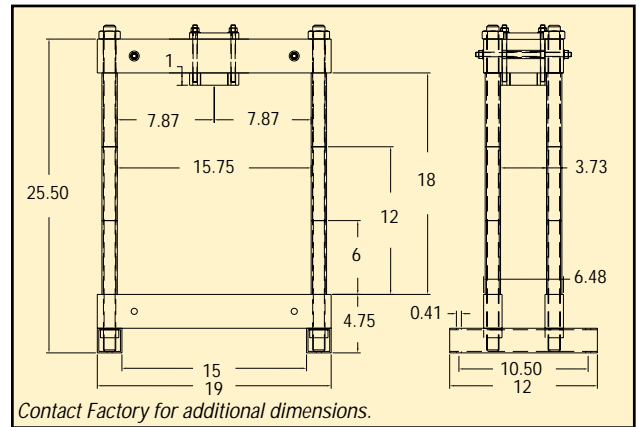


Model Number w/Cyl.	Cap. (tons)	Type	Ram	Stroke (mm)	Model Number w/o Cyl.	Weight (lbs)
IBP1010	10	S/A	R1010	257	IPB10	142
IBP1510	15		R1510	254	IPB15	150

- 10 or 15 ton capacities.
- Adjustable bed.
- Moveable work head.
- Wide variety of power sources.
- Large daylight.
- Heavy duty construction.

### Ordered Separately

Capacity (tons)	Suggested Hand Pump	Suggested Electric Pump	Suggested Hose	Suggested Gauge	Gauge Adaptor	Weight (lbs)
10 ton	P42	PEM2031	HC6	G6	GA1	130
15 ton						



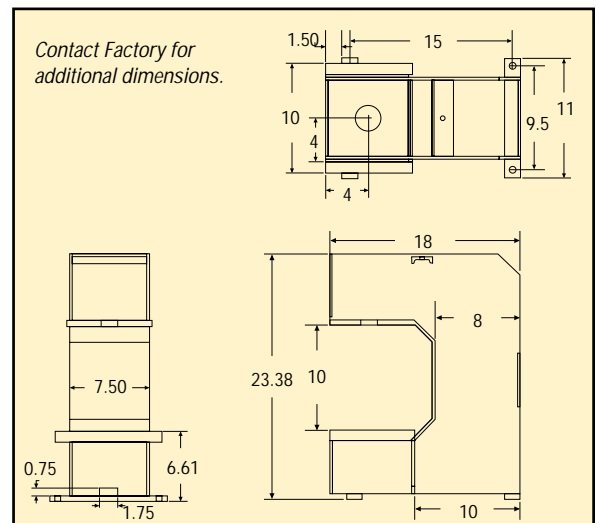
# C-FRAME 5 & 10 TONS



The IPC5 & IPC10 Series hydraulic presses provide up to 5 or 10 ton capacities. Choose from a wide range of electric or air hydraulic power sources.

All models incorporate an open throat design that makes loading and unloading larger jobs fast and easy.

Model Number	Type of C-Frame	Capacity (tons)	Stroke (in)	Weight (lbs)
IPC5	R59 Cylinder Only	5	9	103
IPC10	R1010 Cylinder Only	10	10	110

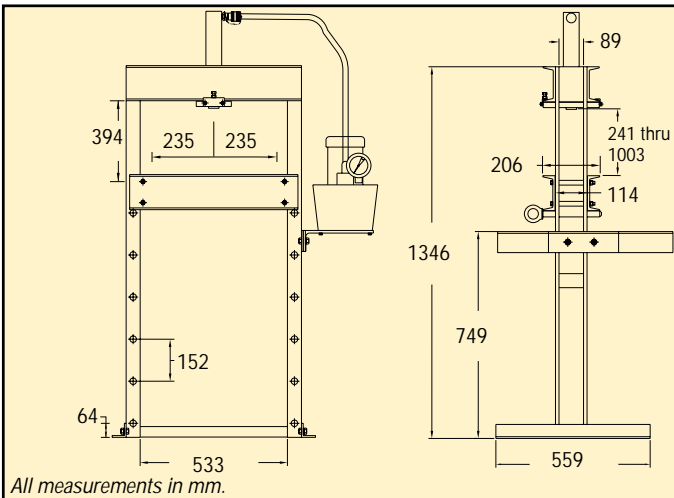


- Strong welded construction.
- Open throat design for easy loading.
- Mounting holes for solid bench mounting.
- Available with air, electric or manual power sources.

10 Ton Press Used In Assembly Of Manual Hoists.



- Single or double acting models available.
- Large daylight with open sides for easy loading.
- Heavy duty welded construction.
- Rigid frame under full load.
- Moveable work head for maximum versatility.
- Adjustable work bed.
- Compact & portable.
- Includes tonnage gauge.
- IES Series comes with pendant control.



A manufacturer of small hoists performs light assembly effortlessly using the Simplex IMS-1010 ten ton press. "We use the press for a variety of light work that varies from job to job. The compact size doesn't take up a lot of floor space, and we can easily move the press to different locations in the shop."

### 10 Ton H-Frame Press

Model Number Without Pump	Model Number With Pump	Type of Cylinder	Cylinder Stroke (mm)	Type of Pump	Pump Model	Operation	Speed (mm/min)		Weight With Pump (kg)	Weight Without Pump (kg)
							Advance	Pressing		
IS1010	IAS1010	R1010 Single Acting 10 Ton Capacity	257	Air Powered	PA91	Advance Hold Retract	787	114	91,8	78,2
	IES1010			Electric Powered	PEM1021A		2642	229	92,7	
				Manual	P42		10*	2*	44,9	
ID1010	IED1010	RDA1010 D/A 10 Ton Capacity	254	Electric Powered	PEM1041A	Advance Hold Retract	2642	229	102,7	85,4
	IMD1010			Manual	P140D		25*	3*	107,3	

\* MM Per Stroke.

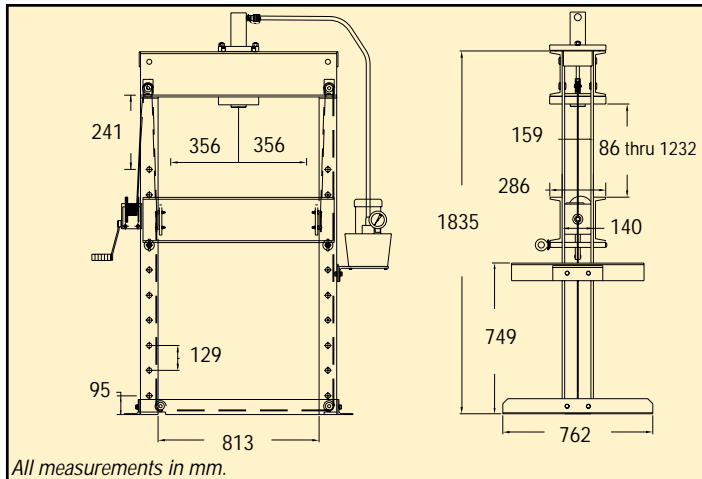
■ Custom Build Your Press by ordering press models without pumps. For foot or pendant control, higher pressing speeds or optional pump motors order separately the Simplex pump and pump mounting kit that meet your requirements, and you're ready for operation.

Pump Mounting Kit	
For Hand Pumps	Model IM2
For Power Pumps	Model IM3
See Page 86	

Simplex 25 Ton Press Reduces Production Line Down Time.



- Large daylight with open sides for easy loading.
- Heavy duty welded construction.
- Rigid frame under full load.
- Moveable work head for maximum versatility.
- Adjustable work bed with friction brake winch.
- Wide choice of pumps & pressing cylinders.
- Includes tonnage gauge.
- IED & IES Series comes with pendant control.



A manufacturer of industrial gear boxes used the Simplex 25 ton press in their production assembly line to press various size bearings on gear assemblies. "We can press up to 100 bearings an hour with the Simplex press. The hydraulics are reliable and easy to use and they keep working day after day."

Pump Mounting Kit	
For Hand Pumps	Model IM2
For Power Pumps	Model IM3
See Page 86	
Cylinder Mounting Kit	
Single-Acting	Model MC25
Included with Press	
See Page 86	

## 25 and 30 Ton H-Frame Press

Model Number Without Pump	Model Number With Pump	Type of Cylinder	Cylinder Stroke (mm)	Type of Pump	Pump Model	Operation	Speed (mm/min)		Weight With Pump (kg)	Weight Without Pump (kg)
							Advance	Pressing		
IS256 IS2514	IAS256 IAS2514	R256/ R2514 Single Acting 25 Ton Capacity	152	Air Powered	PA91	Advance Hold Retract	356	51	189,5	----
	356		196,8							
IS256 IS2514	IES256 IES2514	R256/ R2514 Single Acting 25 Ton Capacity	152	Electric Powered	PEM1021A	Advance Hold Retract	1270	102	190,4	175,9
	356		197,7						183,2	
ID3014	IMS256 IMS2514	RDA3014	152	Manual Powered	P140	Advance Hold Retract	13*	1*	192,3	----
	356		199,5							
ID3014	IED3014 IMD3014	RDA3014	356	Electric	PES3042A	Advance Hold Retract	1016	76	210	194,5
	Manual			P140D	208,2					

\* MM Per Stroke.

■ Custom Build Your Press by ordering models without pumps. For foot or pendant control, higher pressing speeds or optional pump motors order separately the Simplex pump and pump mounting kit that meet your requirements, and you're ready for operation.

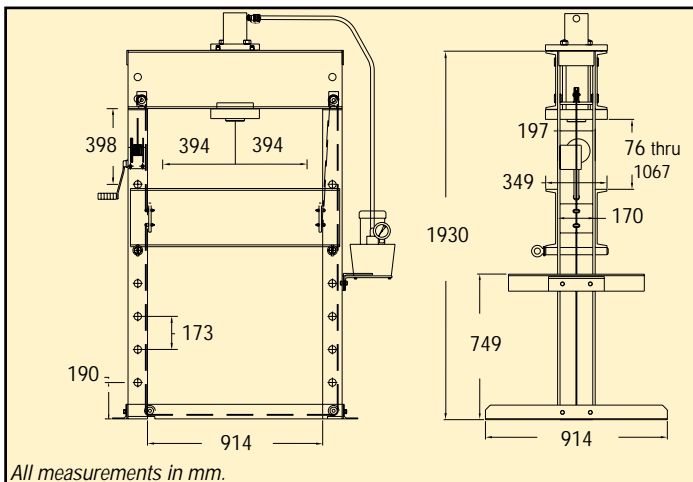
Simplex 55 Ton Press Handles Hundreds Of Different Jobs At Industrial Repair Shops.



- Large daylight with open sides for easy loading.
- Heavy duty construction.
- Rigid frame under full load.
- Moveable work head for maximum versatility.
- Adjustable work bed with friction brake winch.
- Wide choice of pumps & pressing cylinders.
- Choose double-acting presses for fast retraction.
- Includes tonnage gauge.
- IED & IES Series comes with pendant control.



Repair personnel were faced with a variety of difficult bending, pressing, straightening and disassembly jobs. "Almost every day we have to remove bearings, straighten cylinder rods, perform wheel repair, and rebuild gear boxes. The 55 ton press is perfect; it's adjustable bed and moveable work head gives us the flexibility to work on a wide variety of jobs."



Pump Mounting Kit	
For Hand Pumps	Model IM2
For Power Pumps	Model IM3
See Page 86	
Cylinder Mounting Kit	
Single & Double Acting	
Model MC55	
See Page 86	

### 55 Ton H-Frame Press

Model Number Without Pump	Model Number With Pump	Type of Cylinder	Cylinder Stroke (mm)	Type of Pump	Pump Model	Operation	Speed (mm/min)		Weight With Pump (kg)	Weight Without Pump (kg)
							Advance	Pressing		
IS556	IES556	R556 S/A	76	Electric Powered	PEM1021A	Advance Hold Retract	584	51	321,3	306,8
IS5513	IES5513	R5513 S/A	330						334,1	319,5
ID556	IED556	RDA556 D/A	76		PES4042A		889	127	340	322,7
ID5512	IED5512	RDA5512 D/A	305				360,4	343,1		
	IMS556	R556 S/A	76	Manual	P140	6*	1*	323,1	----	

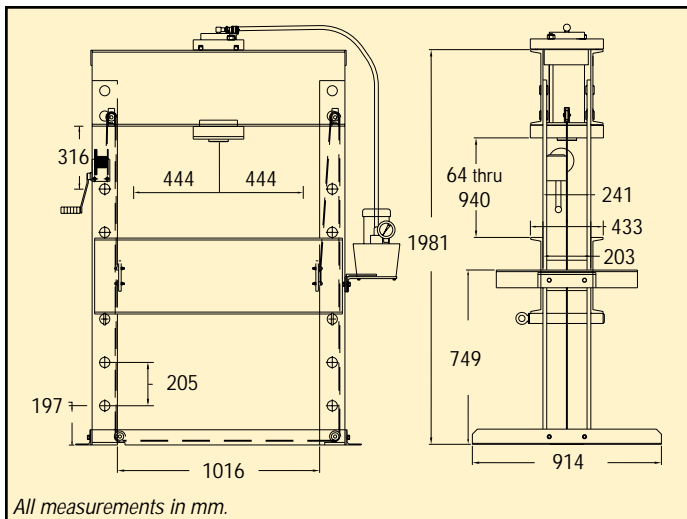
\* MM Per Stroke.

■ Custom Build Your Press by ordering models without pumps. For foot or pendant control, higher pressing speeds or optional pump motors order separately the Simplex pump and pump mounting kit that meet your requirements, and you're ready for operation.

Simplex Presses Enhance Safety In High Force Pressing.



- Moveable work head for maximum versatility.
- Large daylight with open sides for easy loading.
- Heavy duty construction.
- Rigid frame under full load.
- Adjustable work bed with friction brake winch.
- Wide choice of pumps & pressing cylinders.
- Choose double-acting presses for fast retraction.
- Includes tonnage gauge.
- IED & IES Series comes with pendant control.



A machine shop needed to straighten forgings prior to machining. "We needed a pressing force of 100 tons and we didn't want to cut corners when it came to safety. Simplex presses do not rely on "bolt together" construction. Heavy duty pins, plus strong, welded construction across the upper bolster, puts the strength where it needs to be."

<b>Pump Mounting Kit</b>	
For Power Pumps	Model IM3
See Page 86	
<b>Cylinder Mounting Kit</b>	
Single-Acting	Model MC100
Double-Acting	Model MCD100
Included with press.	
See Page 86	

## 100 Ton H-Frame Press

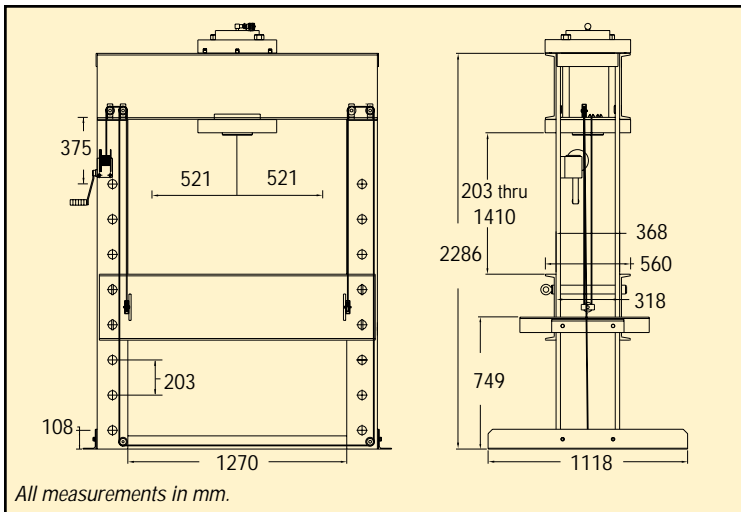
Model Number Without Pump	Model Number With Pump	Type of Cylinder	Cylinder Stroke (mm)	Type of Pump	Pump Model	Operation	Speed (mm/min)		Weight With Pump (kg)	Weight Without Pump (kg)
							Advance	Pressing		
IS1006	IES1006	R1006 S/A	76	Electric Powered	PES4032A	Advance	483	70	708,1	668,1
IS10010	IES10010	R10010 S/A	254							
ID1006	IED1006	RDA1006 D/A	76		PES4042A	Hold	483	70	736,3	696,3
ID10012	IED10012	RDA10012 D/A	305							

■ Custom Build Your Press by ordering models without pumps. For foot or pendant control, higher pressing speeds or optional pump motors order separately the Simplex pump and pump mounting kit that meet your requirements, and you're ready for operation.

*Simplex Monster Press Used In Rail Car Maintenance.*



- Remote control.
- Fast double-acting hydraulics.
- Large daylight with open sides for easy loading.
- Moveable work head for maximum versatility.
- Adjustable work bed with friction brake winch.
- Heavy duty pin & welded construction frame.
- Rigid frame under full load.
- Includes Tonnage Gauge.
- IED Series comes with pendant control.



Rail car repair shops are constantly faced with large jobs, reforming rail car components, installing and removing bolster parts and straightening or bending under-carriage assemblies. These applications require a reliable and safe high tonnage press. "The Simplex Monster Press gave us just what we were looking for, a large work area and easy operation."

*Presses ordered with pumps include remote pendant control and large 18,9 liter reservoir. The pump is floor mounted.*

### 150 & 200 Ton H-Frame Press

Model Number Without Pump	Model Number With Pump	Type of Cylinder	Cylinder Stroke (mm)	Type of Pump	Pump Model	Operation	Speed (mm/min)		Weight With Pump (kg)	Weight Without Pump (kg)
							Advance	Pressing		
ID15012	IED15012	RDA15012 D/A	305	Electric Powered	PES6045 230 3 Ph.	Advance, Hold	508	114	1379,4	1290,3
ID20013	IED20013	RDA20013 D/A	330			Retract	356	89	1445,3	1356,2

■ Custom Build Your Press by ordering models without pumps. Order separately any Simplex pump and pump mounting kit that meet your requirements, and you're ready for operation.