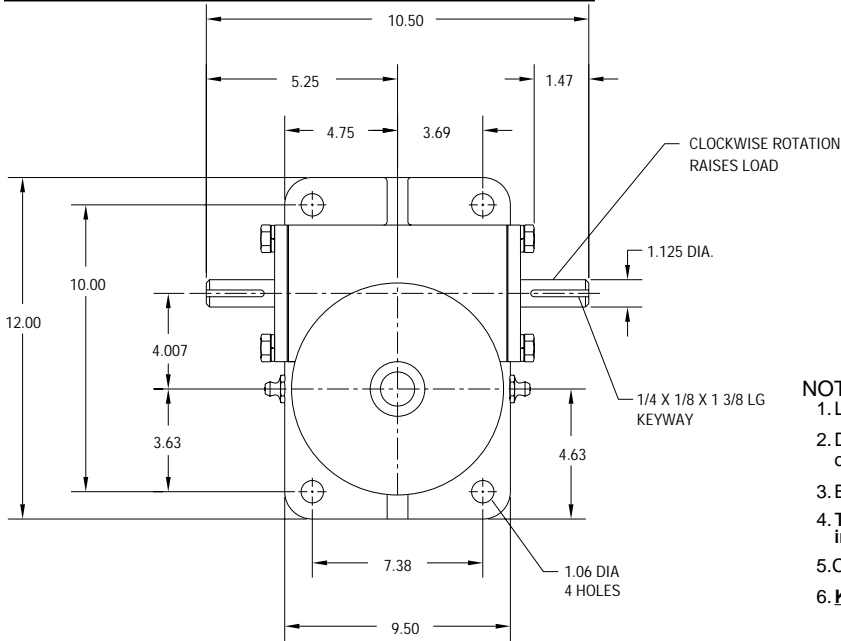


# J-SERIES MACHINE SCREW ACTUATOR

**UNI-LIFT**

LINEAR MOTION  
800-323-9114

## J25 - 25 TON



REF.	GEAR RATIO	TURNS /INCH	TORQUE REQUIRED TO LIFT 1 LB ( lb-in )
L	9:1	18	0.039
H	18:1	36	0.024
RATED CAPACITY			50,000 lbs.
Max Input Speed			1450 rpm
Max Screw Stock			223 in.
Load Screw			2 3/4 in. dia. x .500 in. lead
Stop Nut Allowance			1 3/4 in.

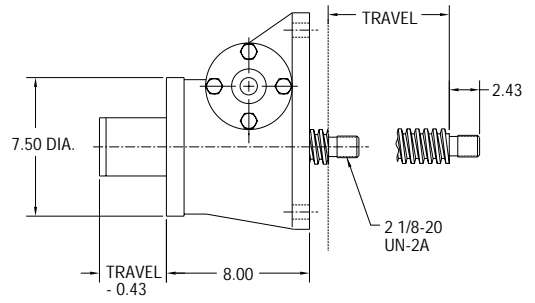
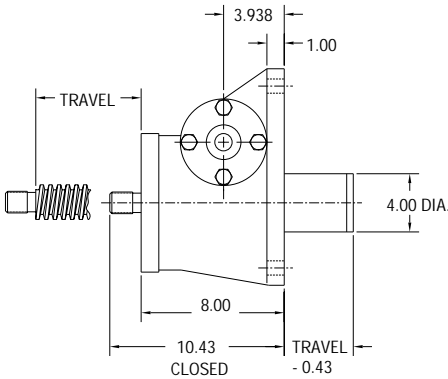
**NOTES:**

1. Load screw or nut must be secured to produce linear travel.
2. Dimensions are for reference only and will change with the addition of boots, attachments, and accessories.
3. Boots and boot adaptors are available. (Pages 74-75)
4. Travel must be adjusted to allow for mounting structure on inverted actuators.
5. Customer is responsible for providing positive stops at ends of travel.
6. **KEYED JACKS: ADD 0 INCHES TO JACK HOUSING.**

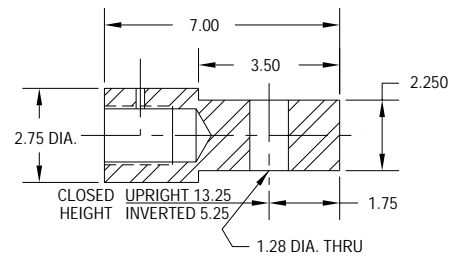
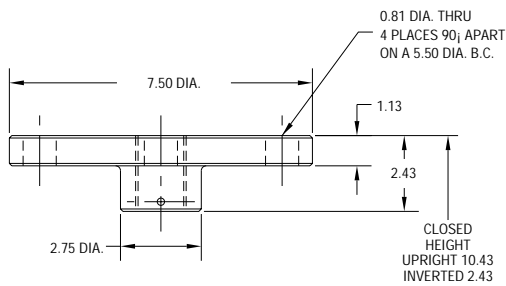
UPRIGHT J-25-U-T

**TRANSLATING & KEYED**

INVERTED J-25-I-T



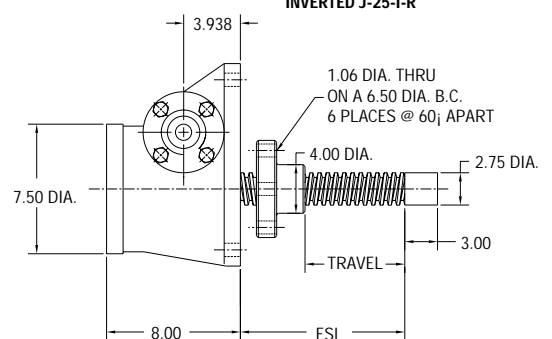
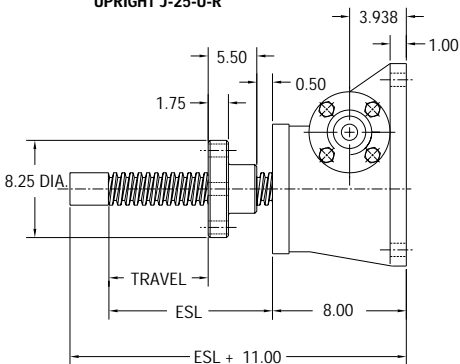
**TOP PLATE AND CLEVIS END OPTIONS**



UPRIGHT J-25-U-R

**ROTATING WITH TRAVELING NUT**

INVERTED J-25-I-R



TRAVEL NUT POSITION B

TRAVEL NUT POSITION A