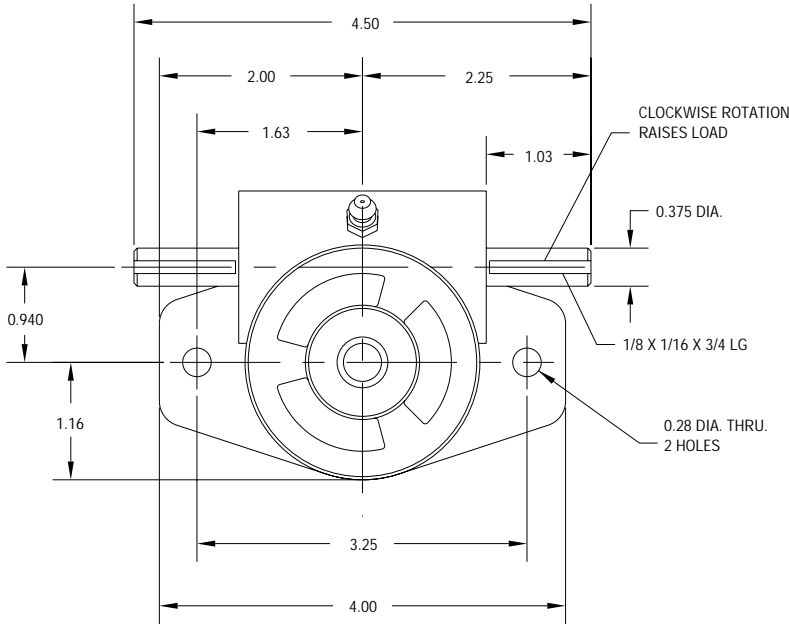


J-SERIES MACHINE SCREW ACTUATOR

UNI-LIFT

LINEAR MOTION
800-323-9114

J3/4 - 3/4 TON



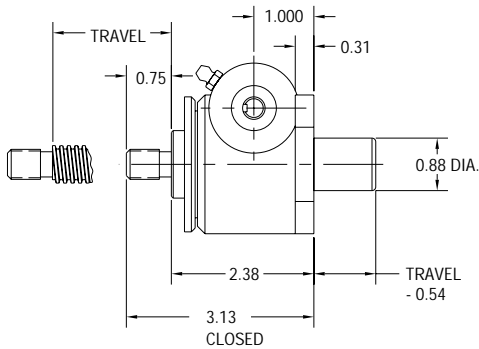
REF.	GEAR RATIO	TURNS /INCH	TORQUE REQUIRED TO LIFT 1 LB (lb-in)
L	5:1	20	0.026
H	5:1	40	0.021
RATED CAPACITY			1,500 lbs.
Max Input Speed			2587 rpm
Max Screw Stock			136 in.
Load Screw			5/8 in. dia. x .125 in. lead (40)
Load Screw			5/8 in. dia. x .250 in. lead (20)
Stop Nut Allowance			N/A

NOTES:

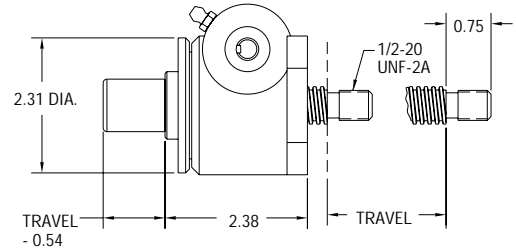
1. Load screw or nut must be secured to produce linear travel.
2. Dimensions are for reference only and will change with the addition of boots, attachments, and accessories.
3. Boots and boot adaptors are available. (Pages 74-75)
4. Travel must be adjusted to allow for mounting structure on inverted actuators.
5. Customer is responsible for providing positive stops at ends of travel.

TRANSLATING & KEYED

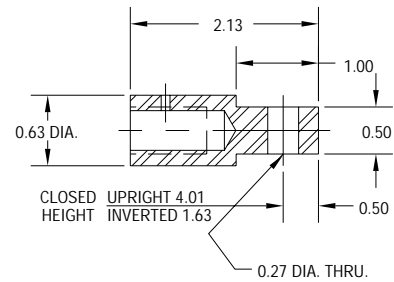
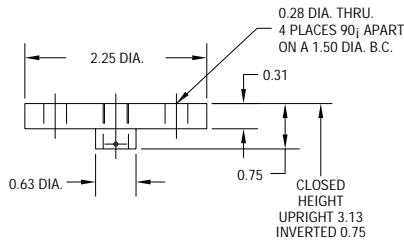
UPRIGHT J-3/4-U-T



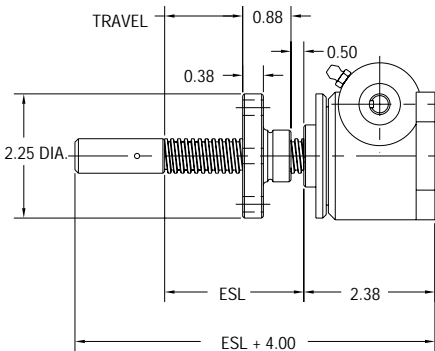
INVERTED J-3/4-I-T



TOP PLATE AND CLEVIS END OPTIONS



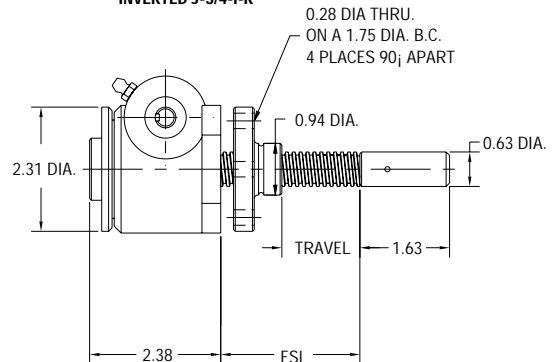
UPRIGHT J-3/4-U-R



TRAVEL NUT POSITION "B"

ROTATING WITH TRAVELING NUT

INVERTED J-3/4-I-R



TRAVEL NUT POSITION "A"