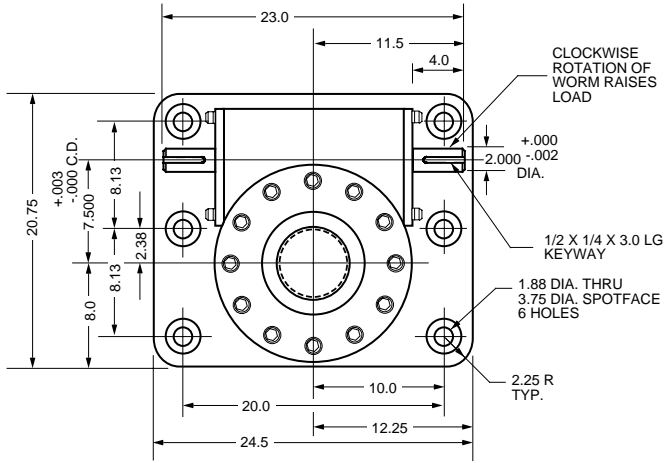


# M-SERIES MACHINE SCREW ACTUATOR

**UNI-LIFT**

LINEAR MOTION  
800-323-9114

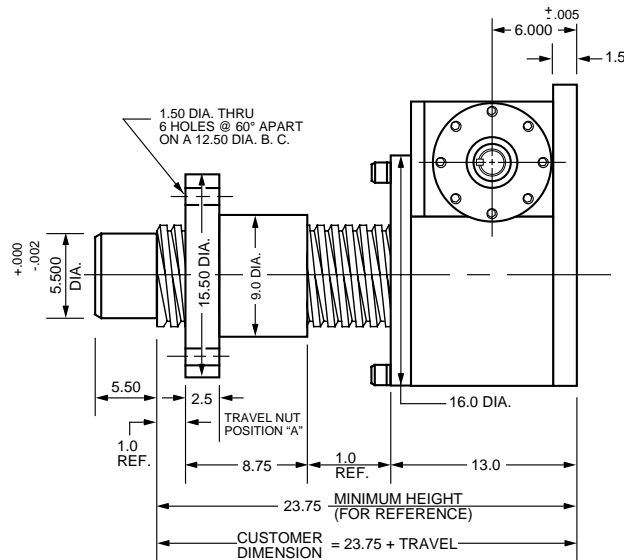
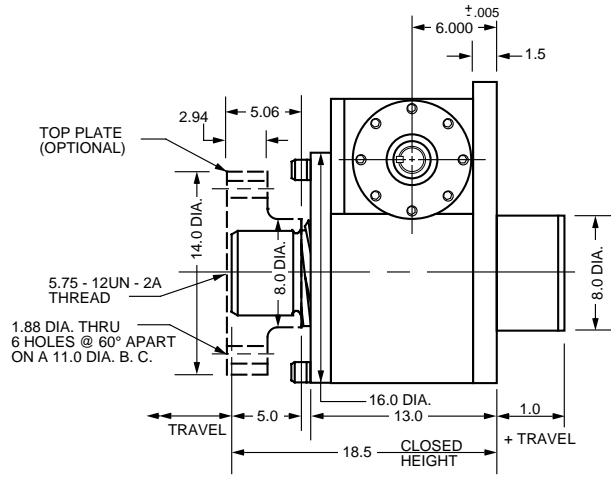
## M150 - 150 TON



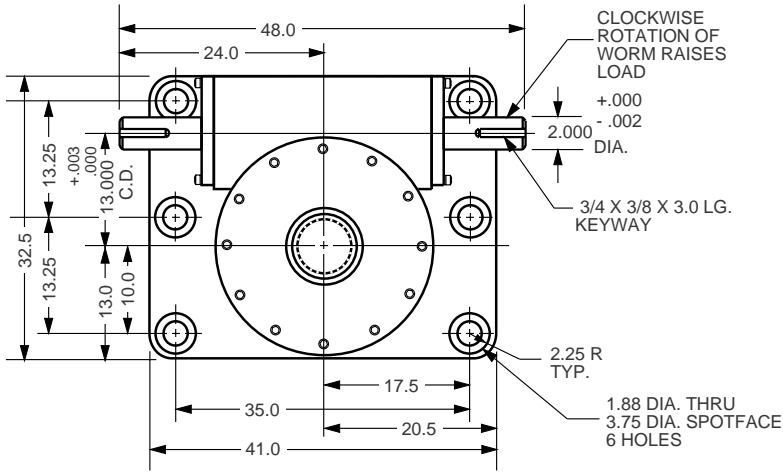
REF.	GEAR RATIO	TURNS /INCH	TORQUE REQUIRED TO LIFT 1 LB ( lb-in )
L	12:1	12	Contact Factory
H	36:1	36	Contact Factory
RATED CAPACITY			300,000 lbs.
Max Input Speed			600 rpm
Max Screw Stock			125 in.
Load Screw			7 in. dia. x 1 in. lead
Stop Nut Allowance			5 in.

**NOTES:**

1. Load screw or nut must be secured to produce linear travel.
2. Dimensions are for reference only and will change with the addition of boots, attachments, and accessories.
3. Boots and boot adaptors are available. (Pages 74-75)
4. **Travel must be adjusted to allow for mounting structure on inverted actuators.**
5. Customer is responsible for providing positive stops at ends of travel.
6. **KEYED JACKS: CONSULT FACTORY.**



**M250 - 250 TON**



REF.	GEAR RATIO	TURNS /INCH	TORQUE REQUIRED TO LIFT 1 LB ( lb-in )
H	50:1	50	Contact Factory
RATED CAPACITY			500,000 lbs.
Max Input Speed			600 rpm
Max Screw Stock			117 in.
Load Screw			9 in. dia. x 1 in. lead
Stop Nut Allowance			6 in.

**NOTES:**

1. Load screw or nut must be secured to produce linear travel.
2. Dimensions are for reference only and will change with the addition of boots, attachments, and accessories.
3. Boots and boot adaptors are available. (Pages 74-75)
4. Travel must be adjusted to allow for mounting structure on inverted actuators.
5. Customer is responsible for providing positive stops at ends of travel.
6. **KEYED JACKS: CONSULT FACTORY.**

