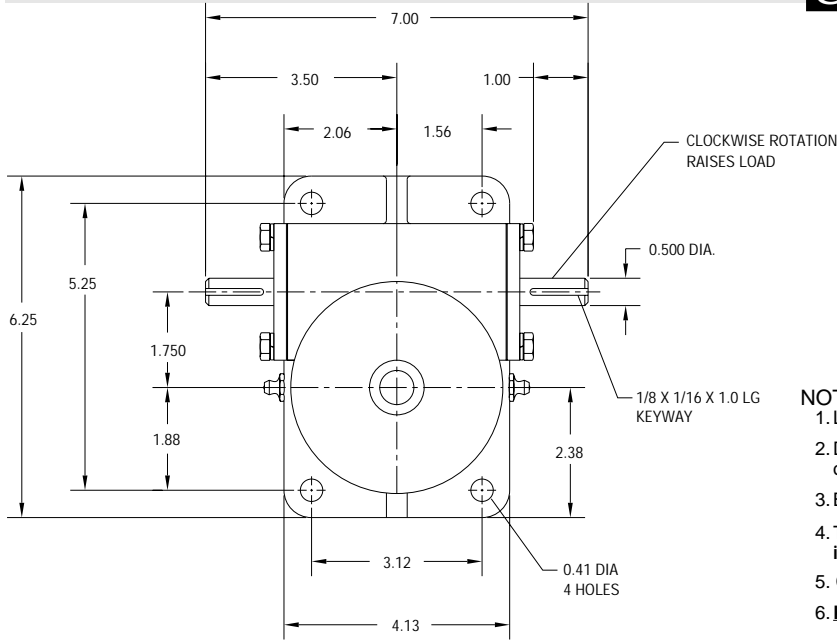


M2.5 - 2.5 TON



| REF. | GEAR RATIO | TURNS /INCH | TORQUE REQUIRED TO LIFT 1 LB (lb-in) |
|--------------------|------------|-------------|--------------------------------------|
| L | 6:1 | 24 | 0.026 |
| H | 24:1 | 96 | 0.011 |
| RATED CAPACITY | | | 5,000 lbs. |
| Max Input Speed | | | 1800 rpm |
| Max Screw Stock | | | 232 in. |
| Load Screw | | | 1 in. dia. x .250 in. lead |
| Stop Nut Allowance | | | .75 in. |

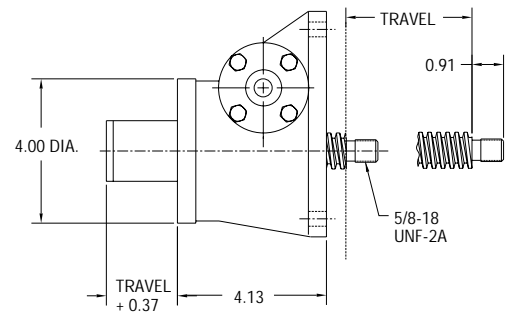
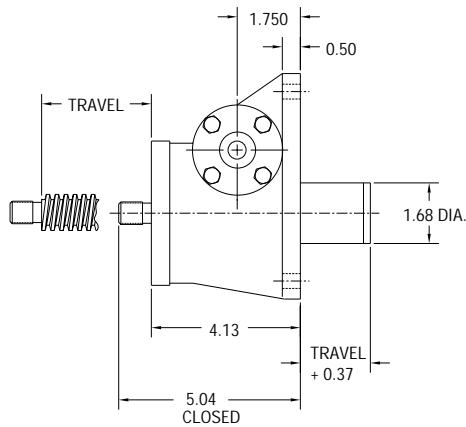
NOTES:

1. Load screw or nut must be secured to produce linear travel.
2. Dimensions are for reference only and will change with the addition of boots, attachments, and accessories.
3. Boots and boot adaptors are available. (Pages 74-75)
4. Travel must be adjusted to allow for mounting structure on inverted actuators.
5. Customer is responsible for providing positive stops at ends of travel.
6. **KEYED JACKS: ADD .5 INCHES TO JACK HOUSING.**

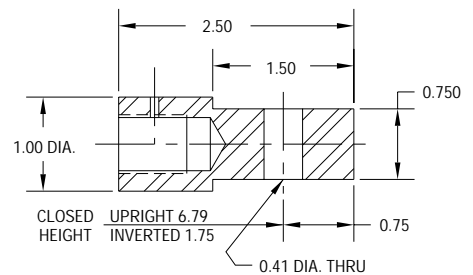
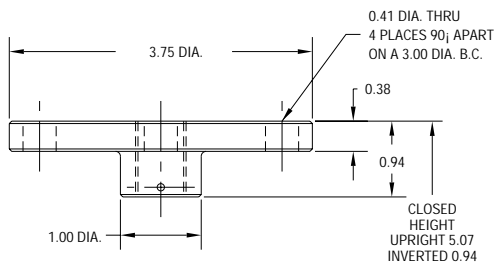
UPRIGHT M-2.5-U-T

TRANSLATING & KEYED

INVERTED M-2.5-I-T



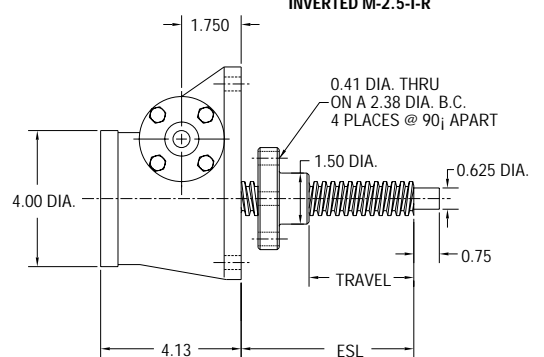
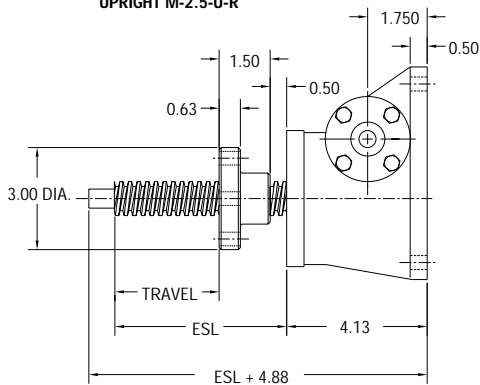
TOP PLATE AND CLEVIS END OPTIONS



UPRIGHT M-2.5-U-R

ROTATING WITH TRAVELING NUT

INVERTED M-2.5-I-R



TRAVEL NUT POSITION B

TRAVEL NUT POSITION A