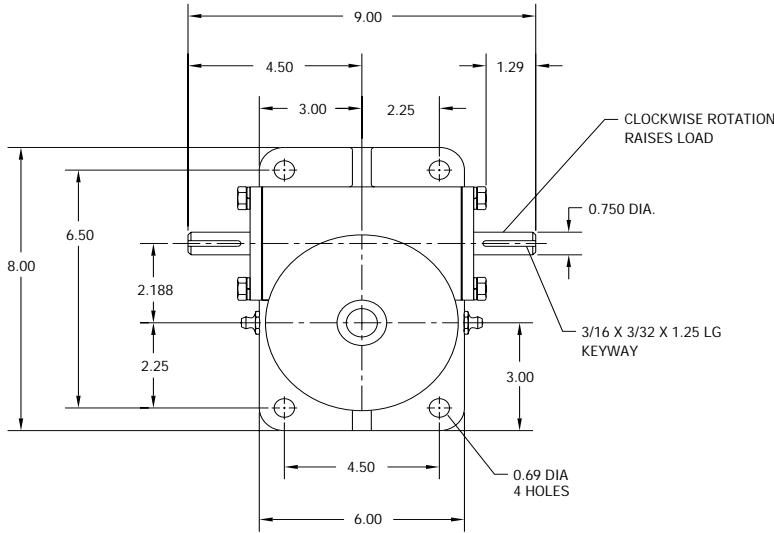


M-SERIES MACHINE SCREW ACTUATOR

UNI-LIFT

LINEAR MOTION
800-323-9114

M5 - 5 TON



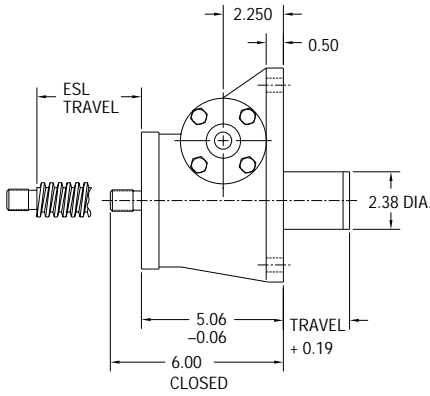
REF.	GEAR RATIO	TURNS /INCH	TORQUE REQUIRED TO LIFT 1 LB (lb-in)
L	6:1	16	0.038
H	24:1	64	0.015
RATED CAPACITY			10,000 lbs.
Max Input Speed			1800 rpm
Max Screw Stock			230 in.
Load Screw			1 1/2 in. dia. x .375 in. lead
Stop Nut Allowance			1.13 in.

NOTES:

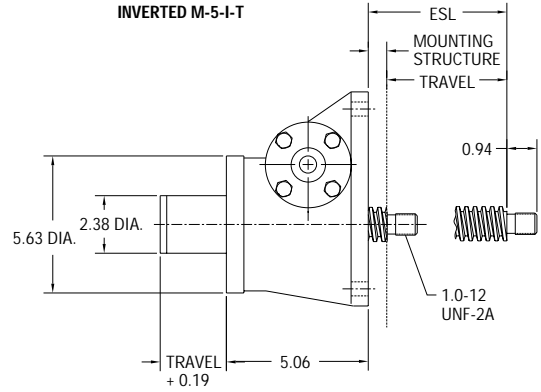
1. Load screw or nut must be secured to produce linear travel.
2. Dimensions are for reference only and will change with the addition of boots, attachments, and accessories.
3. Boots and boot adaptors are available. (Pages 74-75)
4. **Travel must be adjusted to allow for mounting structure on inverted actuators.**
5. Customer is responsible for providing positive stops at ends of travel.
6. **KEYED JACKS: ADD .75 INCHES TO JACK HOUSING.**

TRANSLATING & KEYED

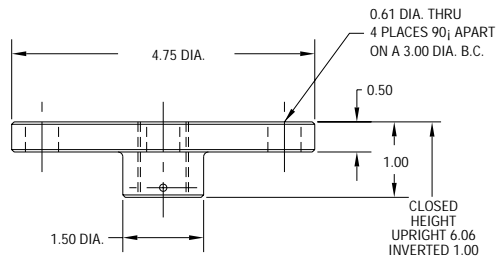
UPRIGHT M-5-U-T



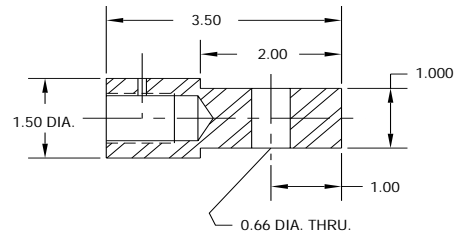
INVERTED M-5-I-T



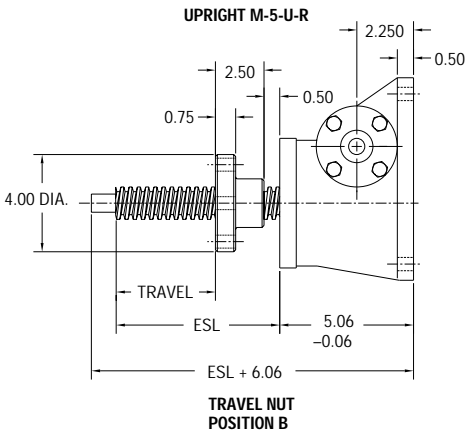
TOP PLATE AND CLEVIS END OPTIONS



M5 CLEVIS



UPRIGHT M-5-U-R



ROTATING WITH TRAVELING NUT

INVERTED M-5-I-R

