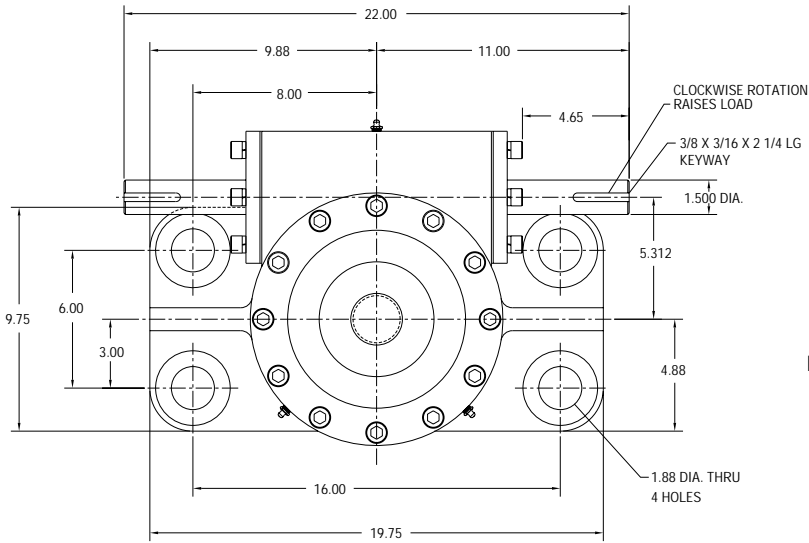


M50 - 50 TON

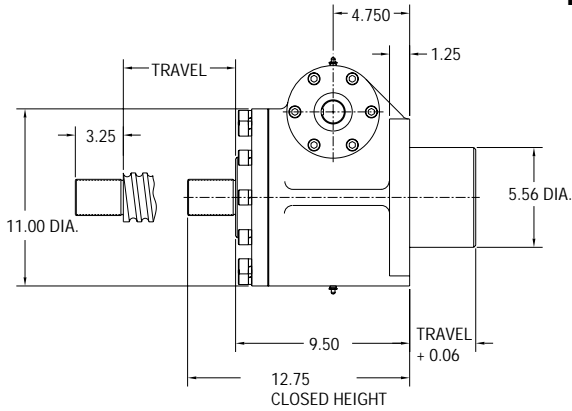


REF.	GEAR RATIO	TURNS /INCH	TORQUE REQUIRED TO LIFT 1 LB (lb-in)
L	10 ² / ₃ :1	16	0.065
H	32:1	48	0.037
RATED CAPACITY			100,000 lbs.
Max Input Speed			1200 rpm
Max Screw Stock			222 in.
Load Screw			4 1/4 in. dia. x .667 in. lead
Stop Nut Allowance			2.25 in.

NOTES:

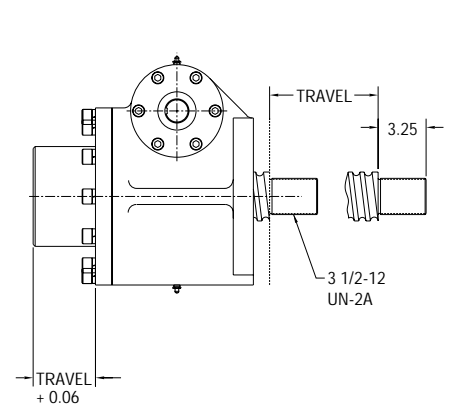
1. Load screw or nut must be secured to produce linear travel.
2. Dimensions are for reference only and will change with the addition of boots, attachments, and accessories.
3. Boots and boot adaptors are available. (Pages 74-75)
4. Travel must be adjusted to allow for mounting structure on inverted actuators.
5. Customer is responsible for providing positive stops at ends of travel.
6. **KEYED JACKS: CONSULT FACTORY.**

UPRIGHT M-50-U-T

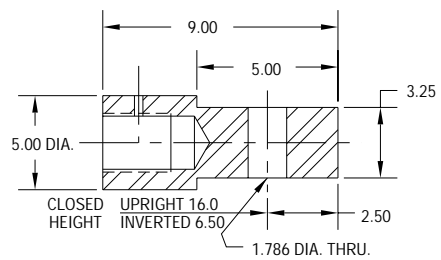
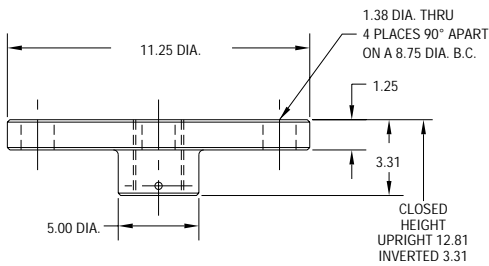


TRANSLATING & KEYED

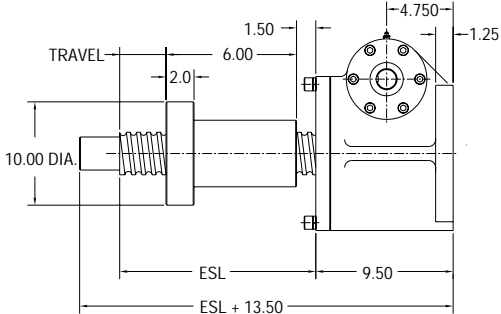
INVERTED M-50-I-T



TOP PLATE AND CLEVIS END OPTIONS

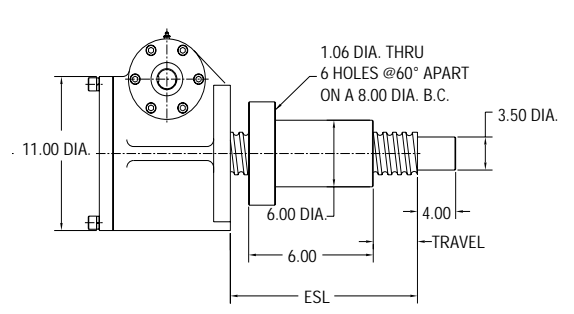


UPRIGHT M-50-U-R



ROTATING WITH TRAVELING NUT

INVERTED M-50-I-R



TRAVEL NUT POSITION "B"

TRAVEL NUT POSITION "A"