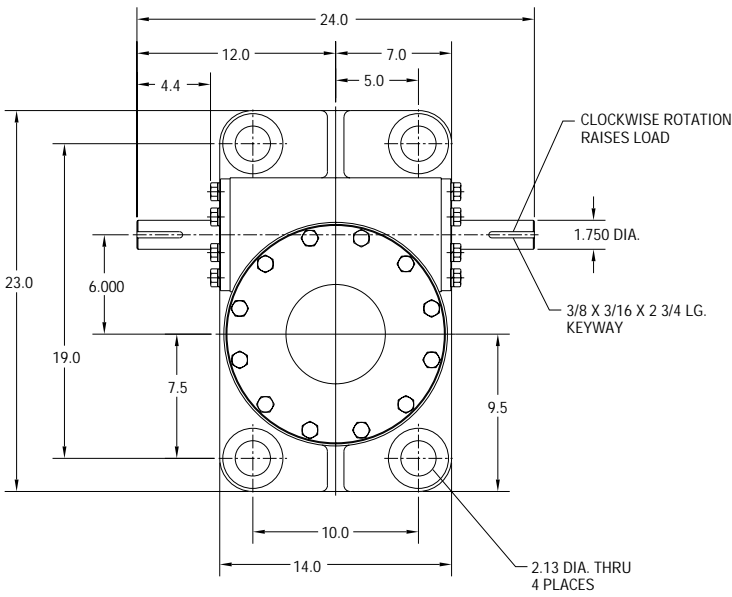


# M-SERIES MACHINE SCREW ACTUATOR

**UNI-LIFT**

LINEAR MOTION  
800-323-9114

## M75 - 75 TON

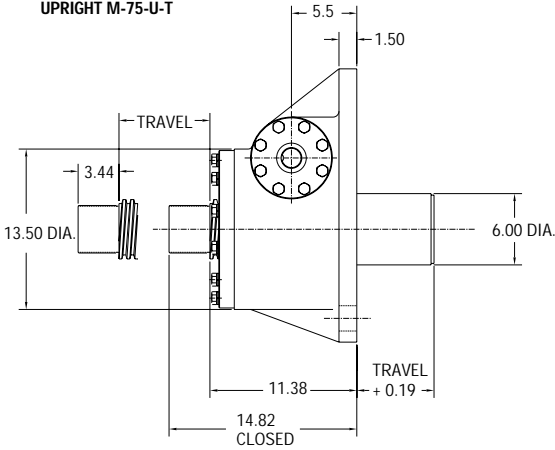


REF.	GEAR RATIO	TURNS /INCH	TORQUE REQUIRED TO LIFT 1 LB ( lb-in )
L	10 <sup>2</sup> / <sub>3</sub> :1	16	0.068
H	32:1	48	0.035
RATED CAPACITY			150,000 lbs.
Max Input Speed			900 rpm
Max Screw Stock			127 in.
Load Screw			5 in. dia. x .666 in. lead
Stop Nut Allowance			2.375 in.

**NOTES:**

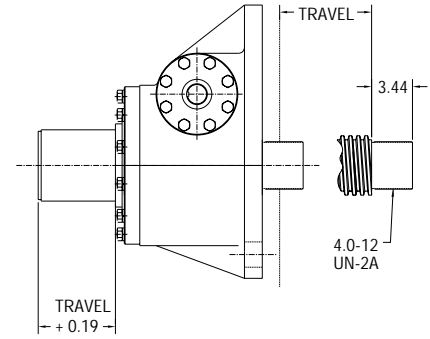
1. Load screw or nut must be secured to produce linear travel.
2. Dimensions are for reference only and will change with the addition of boots, attachments, and accessories.
3. Boots and boot adaptors are available. (Pages 74-75)
4. Travel must be adjusted to allow for mounting structure on inverted actuators.
5. Customer is responsible for providing positive stops at ends of travel.
6. **KEYED JACKS: CONSULT FACTORY.**

UPRIGHT M-75-U-T

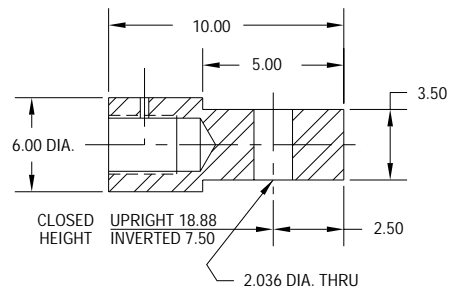
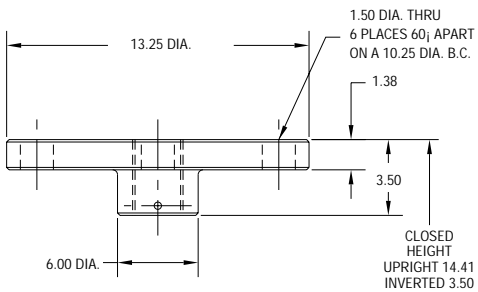


### TRANSLATING & KEYED

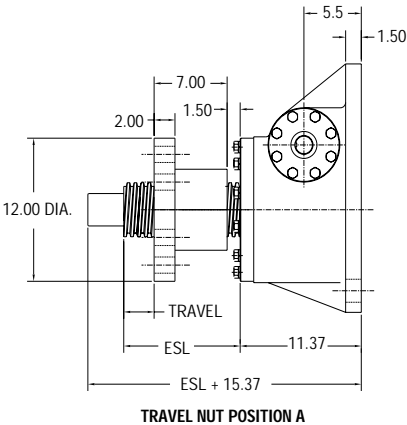
INVERTED M-75-I-T



### TOP PLATE AND CLEVIS END OPTIONS



UPRIGHT M-75-U-T



### ROTATING WITH TRAVELING NUT

INVERTED M-75-I-T

