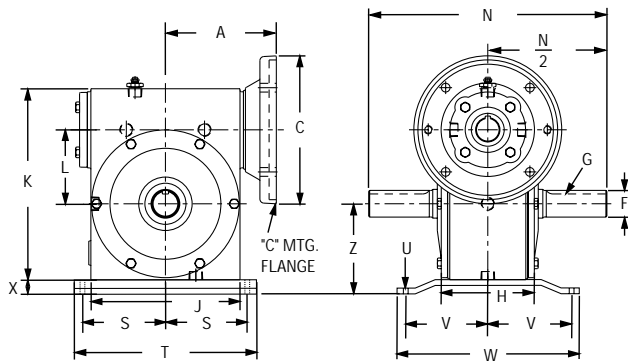


WORM GEAR REDUCERS

"C" Flange
Units
Model 134A
Through
Model 454A



WORM GEAR REDUCER RATING TABLES

C Flange Models	NEMA Flange	Uni-Lift Number	Ratio	1725 RPM Input			1140 RPM Input			Shipping Weight/ Oil Capacity
				Output		Input HP	Output		Input HP	
				RPM	Torque (lb.-in.)		RPM	Torque (lb.-in.)		
134A	56C	2400931	5:1	345	181	1.10	228	212	0.84	13 lbs. 0.09 Gallons
		2400932	10:1	172	235	0.75	114	261	0.55	
		2400933	15:1	115	251	0.56	76	288	0.43	
184A	56C	2400934	5:1	345	358	2.17	228	436	1.73	16 lbs. 0.11 Gallons
		2400935	10:1	172	415	1.72	114	501	1.36	
		2400936	15:1	115	472	1.51	76	540	1.13	
214A	56C 143TC, 145TC	2400937	5:1	345	492	3.01	228	601	2.40	23 lbs. 0.13 Gallons
		2400941	10:1	172	621	2.01	114	776	1.64	
		2400942	15:1	115	663	1.52	76	826	1.23	
264A	182TC, 184TC	2400949	5:1	345	723	4.47	228	915	3.67	33 lbs. 0.19 Gallons
		2400950	10:1	172	1260	3.91	114	1570	3.18	
		2400951	15:1	115	1110	2.51	76	1410	2.06	
324A	182TC, 184TC	2400958	5:1	345	1820	11.1	228	2270	9.0	64 lbs. 0.33 Gallons
		2400959	10:1	172	2323	7.5	114	2820	5.8	
		2400960	15:1	115	2390	5.4	76	3020	4.4	
384A	182TC, 184TC	2400967	5:1	345	2820	17.2	228	3500	13.8	84 lbs. 0.50 Gallons
		2400968	10:1	172	3510	11.2	114	4410	9.0	
		2400969	15:1	115	3750	8.4	76	4730	6.8	
454A	213TC, 215TC	2400976	10:1	172	5130	16.3	114	6400	13.2	112 lbs. 0.9 Gallons
		2400977	15:1	115	5520	12.4	76	6880	10.1	

The above mechanical ratings are based on 2 hour duty cycles with equal shutdown time. For 30 minute duty, multiply table ratings by 1.5. For continuous duty, consult factory. Reducers are shipped dry. Use ISO grade 460 synthetic gear oil.

OUTER DIMENSIONS FOR SIMPLEX WORM GEAR REDUCERS

Model No.	NEMA Flange	A	C	F Out- put Shaft	G Keyseat	H	J	K	L	N	S	T	U	V	W	X	Z
134A	56C	3 3/8	6 1/2	.625 .624	3/16 X 1 1/4 LG	2 15/16	3 1/8	4 3/32	1.333	6 1/2	2.187	5 3/8	11/32	1.656	4 3/16	.687	2.250
184A	56C	3 3/4	6 1/2	.750 .749	3/16 X 1 5/8 LG	3	3 7/8	5	1.750	7	2.875	6 7/8	13/32	2.250	5 5/8	.875	2.750
214A	56C 143TC, 145TC	4 1/8	6 1/2	.875 .874	3/16 X 1 31/32 LG	3 3/4	4 7/8	6	2.062	8 1/2	3.187	7 1/2	15/32	2.343	5 13/16	.562	3.000
264A	182TC, 184TC	4 3/4	9	1.250 1.249	1/4 X 1 25/32 LG	4 5/8	5 5/8	7 7/16	2.625	9	4.000	9 1/2	17/32	2.625	6 3/4	.750	3.687
324A	182TC, 184TC	6 1/4	9	1.375 1.374	5/16 X 2 9/16 LG	4 3/4	7 3/8	8 5/8	3.250	10 7/8	4.750	10 3/4	17/32	3.062	7 3/8	1.125	4.375
384A	182TC, 184TC	6 5/8	9	1.500 1.499	3/8 X 3 1/4 LG	5 3/8	8	10 1/16	3.750	13 3/8	5.187	11 5/8	19/32	3.500	8 1/4	.875	4.812
454A	213TC, 215TC	6 3/4	9	1.625 1.624	3/8 X 1 7/16 LG	6 1/8	9 1/4	11 5/8	4.500	14 1/2	6.062	13 5/16	21/32	3.812	8 7/8	1.000	5.625