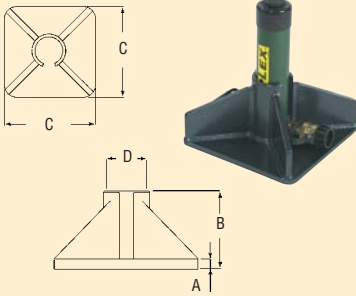


## Cylinder Bases



| Model | A   | B    | C     | D    |
|-------|-----|------|-------|------|
| BA10  | .39 | 4.72 | 9.06  | 2.28 |
| BA25  | .63 | 4.96 | 11.02 | 3.39 |

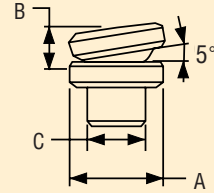
BA10 for R102 through R1014  
BA25 for R252 through R2514

## Cylinder Load Caps



| Model | Type of Cylinder         |
|-------|--------------------------|
| 18347 | Used on R5 Series        |
| 18348 | Used on R10 & R15 Series |
| 85525 | Used on R25 Series       |
| 85525 | Used on R30 Series       |
| 85546 | Used on R55 Series       |
| 85546 | Used on R75 Series       |
| 85546 | Used on R100 Series      |
| 18348 | Used on RDA10 Series     |
| 85525 | Used on RDA30 Series     |
| 88390 | Used on RDA55 Series     |
| 18323 | Used on RDA100 Series    |
| 18326 | Used on RDA150 Series    |
| 87721 | Used on RDA200 Series    |

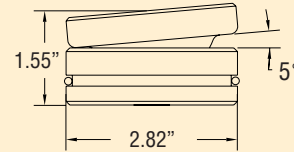
## Tilt Saddles



| Model | A    | B   | C    |
|-------|------|-----|------|
| ATS10 | 1.38 | .59 | .88  |
| ATS25 | 1.97 | .83 | 1.40 |

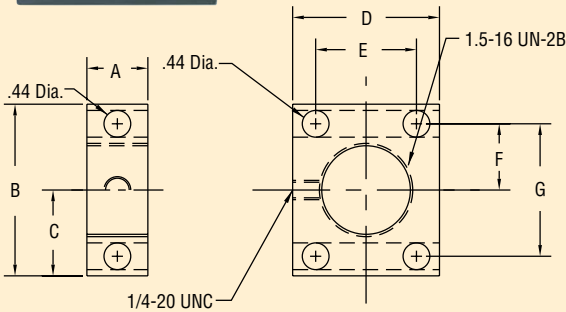
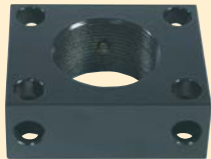
ATS10 for R102 through R1014  
ATS25 for R251 through R2514

ATS100 for R-Series 55, 75 and 100 ton cylinders (See Page 13)



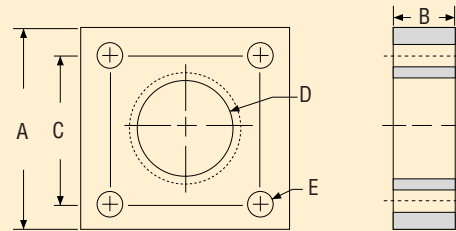
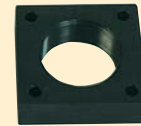
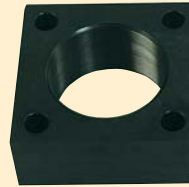
## Mounting Blocks

### Mounting Blocks For R5 Series Cylinders (See Page 11)



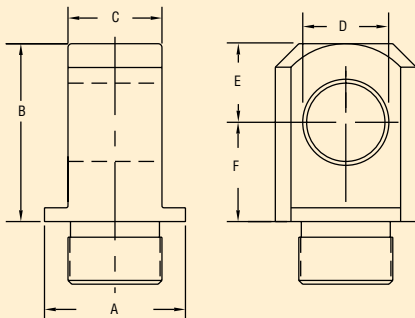
| Model | A   | B    | C    | D    | E    | F    | G    |
|-------|-----|------|------|------|------|------|------|
| BR5   | .99 | 2.75 | 1.38 | 2.36 | 1.62 | 1.06 | 2.12 |

### Mounting Blocks For R10 & R25 Series Cylinders (See Pages 11 & 12)



| Model No. | A (in) | B (in) | C (in) | D (in)          | E (in) |
|-----------|--------|--------|--------|-----------------|--------|
| BR10      | 3.50   | 1      | 2.63   | 2 1/4-14 UNS-2B | 0.34   |
| BR25      | 5      | 2      | 3.66   | 3 5/16-12 UN-2B | 0.66   |

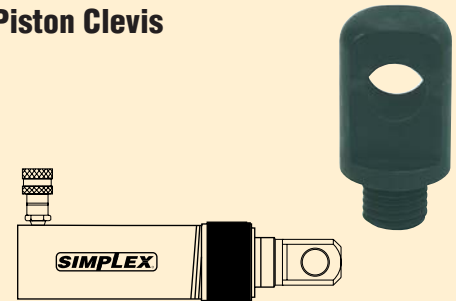
## Piston Clevis



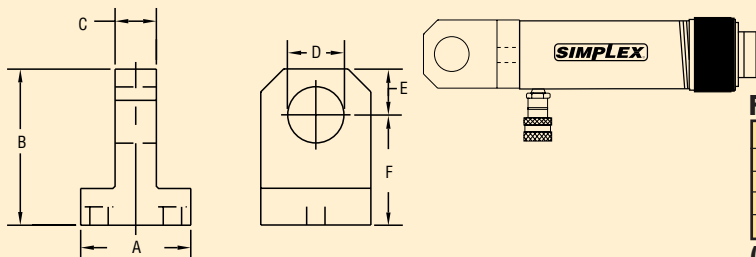
### For R-Series 5, 10, 15 & 25

| Model | A    | B    | C    | D    | E    | F    |
|-------|------|------|------|------|------|------|
| BCR5  | 1.13 | 1.62 | .56  | .63  | .63  | .75  |
| BCR10 | 1.69 | 2.31 | 1.00 | .88  | 1.00 | 1.31 |
| BCR15 | 1.69 | 2.43 | 1.00 | .88  | 1.00 | 1.13 |
| BCR25 | 2.25 | 2.93 | 1.50 | 1.25 | 1.25 | 1.38 |

(See Pages 11 & 12)



## Base Clevis



### For R-Series 5, 10, 15 & 25

| Model | A    | B    | C    | D    | E    | F    |
|-------|------|------|------|------|------|------|
| BC5   | 1.75 | 1.88 | .56  | .63  | .63  | 1.00 |
| BC10  | 2.50 | 2.63 | 1.00 | .88  | 1.00 | 1.38 |
| BC15  | 2.50 | 2.63 | 1.00 | .88  | 1.00 | 1.38 |
| BC25  | 3.75 | 3.13 | 1.50 | 1.25 | 1.25 | 1.63 |

(See Pages 11 & 12)

